

1. Acél keret

Frame is made of $\varnothing 48,3$ mm pipe, wall thickness 2,7mm. Upper u-profile allows to put two steel planks 32cm wide or one aluminum – plywood plank 61cm wide. For elimination of terrain irregularities there are 0,66m, 1,0m and 1,5m height compensating frames.

Article no	Dimensions (m)	Weight (kg)
RFS-07067*	0,66 x 0,73	10,0
RFS-07101	1,00 x 0,73	12,76
RFS-07151*	1,50 x 0,73	15,6
RFS-07203	2,00 x 0,73	19,82



2. Áthidaló acélkeret*

Made of tube with a diameter of 48.3mmx2.7. It is used to bypass cornices, etc.

Article no	Dimensions (m)	Weight (kg)
RFS-07211	2,00 x 0,73	23,50



3. Alumínium keret

Made of $\varnothing 48,3$ mm pipe, will thickness 4mm. It is twice lighter than a steel frame, speeds up assembly and disassembly of scaffolding construction.

Article no	Dimensions (m)	Weight (kg)
RFA-07066	0,66 x 0,73	5,1
RFA-07100	1,00 x 0,73	6,4
RFA-07150	1,50 x 0,73	8,2
RFA-07200	2,00x0,73	9,7



4. Acél elülső keret

Frame ensures security of front fields on the highest level of the scaffolding.

Article no	Dimensions (m)	Weight (kg)
RFS-00073	1,0 x 0,73	12,06



5. Alumínium elülső keret

It is a lighter version of steel front frame.

Article no	Dimensions (m)	Weight (kg)
RFA-00073	1,0 x 0,73	6,9



**make to order only

6. Acél átjáró **

This frame ensures security for pedestrians going under assembled scaffolding.

Article no	Dimensions (m)	Weight (kg)
RFS-27200	1,5 x 2,0	35,9



7. Acél korlátozszlop deszkavédelemmel

Handrail post ensures security on the highest level of the scaffolding. Post has couplings where handrails are installed. Lower part of post prevents unwanted plank removing

Article no	Dimensions (m)	Weight (kg)
RFS-40073	1,0 x 0,73	5,48



8. Alumínium korlátozszlop deszkával védelem 0,73m

It is a lighter version of steel handrail post.

Article no	Dimensions (m)	Weight (kg)
RFA-40073	1,0 x 0,73	3,3



9. Acél korlátozszlop

Post is recommended for installation on the highest level of the scaffolding.

Article no	Dimensions (m)	Weight (kg)
RFS-04073	1,00	4,22
RFS-11074	2,00	8,9



10. Alumínium korlátozszlop

It is an alternative version of steel handrail post.

Article no	Dimensions (m)	Weight (kg)
RFA-04073	1,0	2,2



**make to order only

11. Net képernyőn

Post is designed for installing protective net on the highest level of the scaffolding

Article no	Dimensions (m)	Weight (kg)
RFS-11073	2,0 x 0,73	9,26



12. Mobil gerenda **

Designed to assemble mobile tower with facade scaffolding.

Article no	Dimensions (m)	Weight (kg)
RFS-03073	0,73	26,3



13. Első korlát

Front railing ensures security of front fields on the intermediate levels of the scaffolding.

Article no	Dimensions (m)	Weight (kg)
RFS-15073	0,73	3,82



14. Szimpla korlát

Made of \varnothing 38 mm steel pipe. Stiffens and stabilizes construction of the scaffolding. Designed to ensure security of scaffolding users.

Article no	Dimensions (m)	Weight (kg)
RFS-01073	0,73	1,56
RFS-01109	1,09	2,05
RFS-01157	1,57	3,14
RFS-01207	2,07	3,44
RFS-01257	2,57	4,04
RFS-01307	3,07	4,90



**make to order only

15. Dupla alumínium korlát

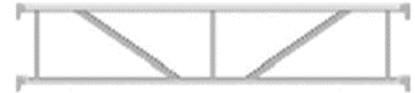
Stiffens scaffolding construction.
Replaces two simple handrails.

Article no	Dimensions (m)	Weight (kg)
RFA-01157	1,57	3,4
RFA-01207	2,07	4,2
RFA-01257	2,57	5,0
RFA-01307	3,07	5,8



16. Dupla alumínium koncentrikus korlát

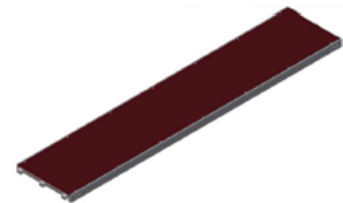
Indeks	Wymiar (m)	Waga (kg)
RFA-02157	1,57	3,9
RFA-02207	2,07	4,6
RFA-02257	2,57	6,57
RFA-02307	3,07	7,48



17. U - alumínium rétegelt lemez

Frame of plank is made of aluminium, the surface is finished with anti-slip plywood. Aluminium-plywood plank is alternative for two steel deck.

Article no	Dimensions (m)	Weight (kg)
RFA-61157N	1,57 x 0,61	13,0
RFA-61207N	2,07 x 0,61	17,0
RFA-61257N	2,57 x 0,61	19,5
RFA-61307N	3,07 x 0,61	23,0



18. U - alumínium furnérlemez létrával

This deck ensures access to upper levels of scaffolding. Deck has a hatch and aluminium ladder.

Article no	Dimensions (m)	Weight (kg)
RFA-60257N	2,57 x 0,61	26,5
RFA-60307N	3,07 x 0,61	29,5



**make to order only

19. U - alumínium-fafajtájú létra nélkül

Enables vertical communication inside the scaffolding.

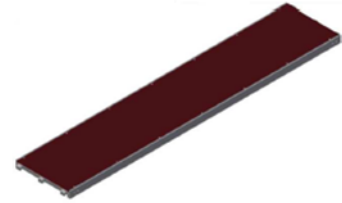
Article no	Dimensions (m)	Weight (kg)
RFA-62157	1,57 x 0,61	17,1
RFA-62207	2,07 x 0,61	20,1
RFA-62257	2,57 x 0,61	23,1
RFA-62307	3,07 x 0,61	26,1



20. U - alumínium rétegelt lemez, acél kampókkal

Supporting structure of the deck made of aluminum. Filling the deck made of waterproof plywood with non-slip surface. An aluminum and plywood bridge replaces two steel bridges. Completed with brackets for mounting on the U-ledger.

Article no	Dimensions (m)	Weight (kg)
RFA-61157	1,57 x 0,61	13,0
RFA-61207	2,07 x 0,61	17,0
RFA-61257	2,57 x 0,61	19,5
RFA-61307	3,07 x 0,61	23,0



21. U - alumínium-fafajtájú létrák létrával és acélhorgokkal

Enables vertical communication inside the scaffolding.

Article no	Dimensions (m)	Weight (kg)
RFA-60257	2,57x0,61	26,5
RFA-60307	3,07x0,61	29,5



22. U - acél fedélzet

Steel deck is made of steel plate, hot-dip galvanized. Round perforation, ended with hooks for installation on u-profile of frame. Nominal load depending on length of plank is up to 5 kn/m².

Article no	Dimensions (m)	Weight (kg)
RFS-84073	0,73 x 0,32	5,40
RFS-84109	1,09 x 0,32	7,50
RFS-84157	1,57 x 0,32	10,10
RFS-84207	2,07 x 0,32	13,36
RFS-84257	2,57 x 0,32	15,50
RFS-84307	3,07 x 0,32	18,90



**make to order only

23. U - acél fedélzet keresztartókkal

Steel deck is perforated, on the other side there is crosspieces for easier assembly and disassembly of scaffolding.

Article no	Dimensions (m)	Weight (kg)
RFS-85157	1,57 x 0,32	10,0
RFS-85207	2,07 x 0,32	13,7
RFS-85257	2,57 x 0,32	16,0
RFS-85307	3,07 x 0,32	18,9



24. U - alu hornyolt létrafedélzet **

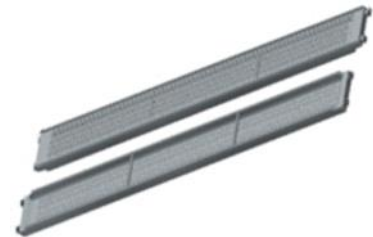
Article no	Dimensions (m)	Weight (kg)
RFA-70257LN	2,57	6,5
RFA-70307LN	3,07	10,5



25. U - alumínium fedélzet keresztartókkal **

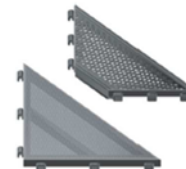
Perforated aluminium deck with crossbars for easier assembly and disassembly. Completed with brackets for mounting on the U-profile.

Article no	Dimensions (m)	Weight (kg)
RFA-32157N	1,57	6,50
RFA-32207N	2,07	7,80
RFA-32257N	2,57	9,20
RFA-32307N	3,07	10,5



26. Háromszög acél fedélzet **

Article no	Dimensions (m)	Weight (kg)
RFS-84001	0,32x0,73	13,36
RFS-84010	0,32x0,73	13,36



**make to order only

27. Menetes láb

Base jack on 150x150mm foot with threaded pipe and nut. Flattened thread ensures the nut will not be lost. The maximum regulated height is 40 cm for 60 cm base jack.

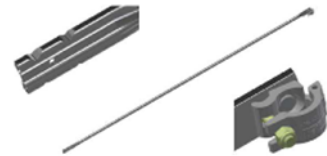
Article no	Dimensions (m)	Weight (kg)
RFS-12160	0,6	3,58
RFS-12080	0,8	5,26



28. Átlós merevítő

Brace stiffens the construction. Made of \varnothing 42 mm diameter pipe with half coupling on its end

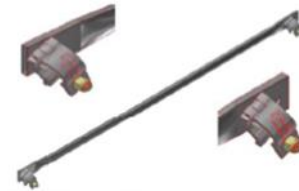
Article no	Dimensions (m)	Weight (kg)
RFS-50207	2,07 x 2,0	6,38
RFS-50257	2,57 x 2,0	6,86
RFS-50307	3,07 x 2,0	7,82



29. Átlós merevítő ék csatlakozóval

Brace stiffens the construction. Instead of half coupling with bolt and nut on the ending is used coupling with wedge.

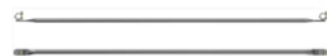
Article no	Dimensions (m)	Weight (kg)
RFS-54177	1,77	8,2
RFS-54195	1,95	8,8



30. Vízszintes merevítő

Horizontal braces are used to stiffen lower level of scaffolding where normal diagonal braces are installed.

Article no	Dimensions (m)	Weight (kg)
RFS-55207	2,07	9,2
RFS-55257	2,57	11,1
RFS-55307	3,07	13,0



31. Végoldali lábdeszka

Wooden toe board, impregnated, finished with steel fittings. Mounted at the height of the platform. It is used to secure working platforms.

Article no	Dimensions (m)	Weight (kg)
RFS-20073	0,73 x 0,15	1,80
RFS-20109	1,09 x 0,15	2,70
RFS-20157	1,57 x 0,15	4,24
RFS-20207	2,07 x 0,15	5,40
RFS-20257	2,57 x 0,15	6,70
RFS-20307	3,07 x 0,15	7,80



**make to order only

32. Tábla csatlakozók

Article no	Dimensions (m)	Weight (kg)
ZNN-07110	-	0,95



33. Ékkel ellátott bútorlap-csatlakozók

Indeks	Wymiar [m]	Waga [kg]
ZNN-07111	-	0,95



34. Fali nyakkendő

The anchoring connector is mounted using two connectors to the stands. Shorter connectors are mounted with one connector to one stand. Used to anchor the scaffolding to the facade of the building.

Indeks	Wymiar [m]	Waga [kg]
RFS-17040	0,4	1,70
RFS-17085	0,85	3,10
RFS-17110	1,1	4,84
RFS-17130	1,3	4,84
RFS-17150	1,5	4,84



35. Szemcsavar

It is used to anchor the scaffolding to the wall, used together with an expansion pin.

Article no	Dimensions (m)	Weight (kg)
ZŚR-0120	0,12	0,10
ZŚR-00300	0,3	0,33



36. Biztonság PIN

The safety pin protects against the disconnection of steel frames.

Article no	Dimensions (m)	Weight (kg)
RFS-00011	-	0,10



**make to order only

37. Acél létra

Steel ladder with perforated metal rungs.

Article no	Dimensions (m)	Weight (kg)
RFS-01021	2,15	11,00



38. Lépcsőhüvelyes védelem 1,00 x 0,50 m, acél, tartozékkal rögzítőcsap 12 x 70 m, horganyzott

For lateral fall protection of circulating bay when using aluminium stairways.

Article no	Dimensions [m]	Weight [kg]
RFS-32002	1,00 x 0,50	5,25



39. Alumínium lépcsők

* stairs with perforated steps

Article no	Dimensions (m)	Weight (kg)
RFA-35257N	2,57x0,63	23
RFA-35307N	3,07x0,63	27
RFA-30257 N	2,57x0,63	23
RFA-30307N*	3,07x0,63	27



40. U-alumínium lépcsők 1,0 m **

* steps make of perforated sheet

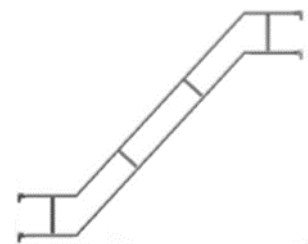
Article no	Dimensions [m]	Weight [kg]
RFA-30100*	1,0x0,64	14,15
RFA-35100	1,0x0,64	14,15



41. Lépcső védőkoriát

Ensures safety while using stairway.

Article no	Dimensions (m)	Weight (kg)
RFA-31257	2,57	16,0
RFA-31307	3,07	17,8

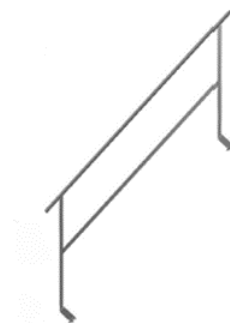


**make to order only

42. Belső lépcsőház védőkorlát

Mounted in a set with a handrail handle. Enables secure communication on the scaffolding.

Article no	Dimensions (m)	Weight (kg)
RFS-32001	-	11,97



43. Kezdeti lépcsők u-könyve

This element is used for supporting stair on the lowest most level of staircase.

Article no	Dimensions (m)	Weight (kg)
RFS-22730	0,73	3,20



44. Keresztirányú U-főkönyv

Allows you to put deck at any height of frame.

Article no	Dimensions (m)	Weight (kg)
RFS-22073	0,73	3,6



45. U-konzol tartó ékfejjel

Console is used to widen scaffolding platform. maximum load of console 0,36 m - 3 kN/m², 0,73 m - 1 kN/m². Wide consoles are used with transverse braces.

Article no	Dimensions (m)	Weight (kg)
RFS-12036	0,36	3,64
RFS-12073	0,73	6,22
RFS-12074	0,73 x 2,0	6,30
RFS-12109	1,09	11,9



46. Platform védelem

An element protecting the platform against falling out.

Indeks	Wymiar [m]	Waga [kg]
RFS-16036	0,36	0,99
RFS-16073	0,73	1,75
RFS-16109	1,09	2,48



**make to order only

47. Védő tetőkonzol

**

Console is used to secure pedestrians.
Used together with console 0,73m.

Article no	Dimensions (m)	Weight (kg)
RFS-14073	0,73	5,9



48. Net képernyő **

Net screen is used on upper level of scaffolding instead of handrails and longitudinal curbs.

Article no	Dimensions (m)	Weight (kg)
RFS-13157	1,57 x 1,0	16,9
RFS-13207	2,07 x 1,0	21,5
RFS-13257	2,57 x 1,0	25,1
RFS-13307	3,07 x 1,0	28,6

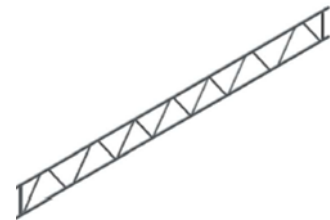


49. Acélrács gerendák

**

Beams is used to assemble platforms, to make hanging platforms to or to make passage under scaffolding construction.

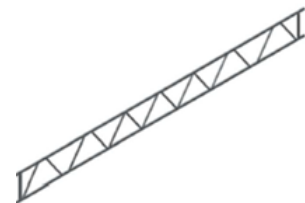
Article no	Dimensions (m)	Weight (kg)
RFS-05324	3,24 x 0,5m	35,5
RFS-05424	4,24 x 0,5m	45,5
RFS-05524	5,24 x 0,5m	54,5
RFS-05624	6,24 x 0,5m	64,0



50. Alumínium rácsos gerendák

Is it alternative for steel beams, this beams is easier to assemble and disassemble.

Article no	Dimensions (m)	Weight (kg)
RFA-05324	3,24 x 0,5m	14,2
RFA-05424	4,24 x 0,5m	18,8
RFA-05524	5,24 x 0,5m	22,6
RFA-05624	6,24 x 0,5m	26,4
RFA-05824	8,24 x 0,5m	34,4



51. Rács gerenda csatlakoztatása

Connection is used together with steel and aluminum girders. It allows connecting girders of different length.

Article no	Dimensions (m)	Weight (kg)
RFA-05000	0,4	2,20



**make to order only

52. Alumínium fedélzeti gerenda **

Beam are installed on girders to make platforms on them.

Article no	Dimensions (m)	Weight (kg)
RFA-21064	0,64	2,7
RFA-21090	0,90	3,3
RFA-21120	1,20	3,8
RFA-21160	1,60	5,2
RFA-21192	1,92	5,8
RFA-21300	3,00	8,5
RFA-21400	4,00	10,2
RFA-21500	5,00	12,7
RFA-21600	6,00	15,2



53. Jib a blokkhoz

For vertical transport of material components from scaffolding.

Article no	Dimensions (m)	Weight (kg)
RFS-25080	0,8	7,00



54. Moduláris raklap

Pallet is used for easy transportation and storage of scaffolding elements.

Article no	Dimensions (m)	Weight (kg)
RFS-61280	1,2 x 0,8 x 0,8	26,84
RFS-61282**	1,2X 0,8 x 0,9	28,00
RFS-61290**	1,2 x 0,9	40,0
RFS-60566*	1,2 x 0,9	47,40
RFS-61211**	1,2x1,1x0,94	34,00



55. Moduláris doboz **

* A possible option with a galvanized steel insert

Article no	Dimensions (m)	Weight (kg)
RFS-61281	0,8 x 1,2	58,50

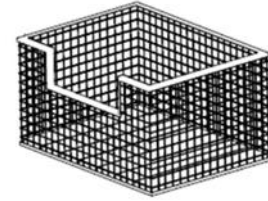


**make to order only

56. Nettó raklap fa betétel **

It is used for storing and transporting small scaffolding elements. Mounted in a modular pallet. Sold in a set with a wooden floor*

Article no	Dimensions (m)	Weight (kg)
RFS-60567	1,08 x 0,68	30,40



* A possible option with a galvanized steel insert

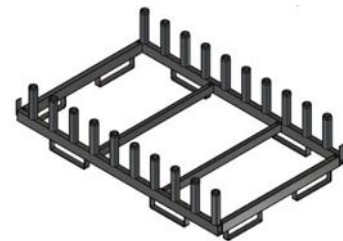
57. Magas raklap homlokzati keretekhez + biztonság **

Article no	Dimensions [m]	Weight [kg]
RFS-61273	0,8 x 1,2	22,00



58. Alacsony raklap homlokzati keretekhez 0,8 x 1,2m**

Article no	Dimensions [m]	Weight [kg]
RFS-61274	0,73 x 1,20	19,50



59. Cső raklap 125**

Article no	Dimensions [m]	Weight [kg]
RFS-61285	1250x850x275	35,50



**make to order only

60. Raktár raklap nyitott verzió

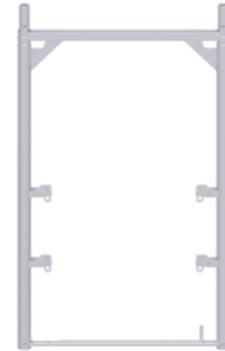
For high folding in the scope of: frames, steel platforms, handrails, bracing, etc.

Article no	Dimensions [m]	Weight [kg]
RNS-07113	110x70x55 [50X50X3]	31,00



61. Acél szerelőkeret 4 védőkorlát ék házával **

Article no	Dimensions [m]	Weight [kg]
RFS-07203K	2,00 x 0,73	20,00



62. Fix bilincs

Used to connect pipes at an angle of 90°.

Article no	Dimensions (m)	Weight (kg)
ZNN-ZB02CH	-	1,34



63. Forgó bilincs

Used to connect pipes at any angle

Article no	Dimensions (m)	Weight (kg)
ZNN-ZB01CH	-	1,44



64. Korlátcsatlakozó ékkel

Article no	Dimensions (m)	Weight (kg)
ZNN-07048	-	0,94



**make to order only

65. Hüvely csatlakozó **

Used to connect two pipes.

Article no	Dimensions (m)	Weight (kg)
ZNN-07049	-	0,70



66. Horogcsatlakozó **

The element used to connect the 48.3 steel pipe elements of the supporting structure of the building.

Article no	Dimensions (m)	Weight (kg)
ZNN-07030	-	0,95



67. Csatlakozó + szögtartó

With steel bracket for fixing wooden profiles

Article no	Dimensions [m]	Weight [kg]
ZNN-07200	-	1,70



update 19/05/2020

**make to order only



Żabokliki, ul. Korczewska 57

08-110 Siedlce

tel. + 48 25 631 03 30

fax. + 48 633 14 16

e-mail: info@olan.siedlce.pl

[WWW. OLAN.SIEDLCE.PL](http://WWW.OLAN.SIEDLCE.PL)